

---

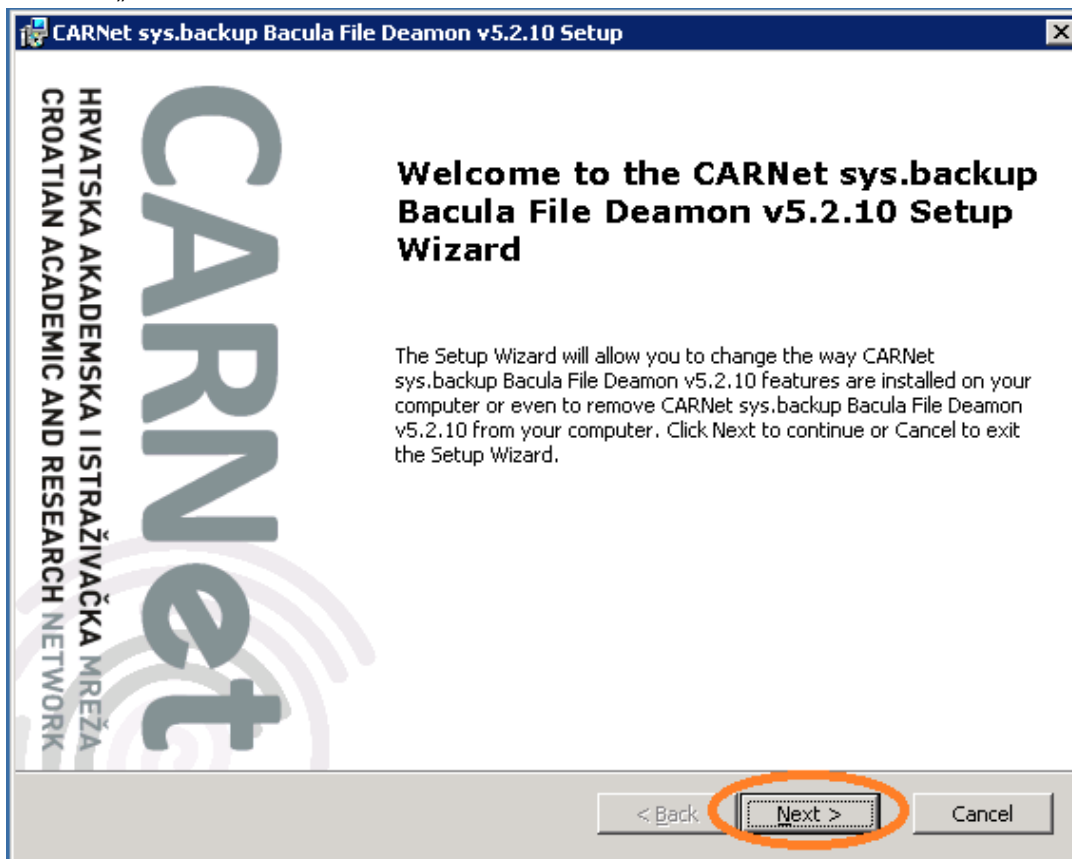
# Upute za dodavanje poslužitelja u sys.backup uslugu

---

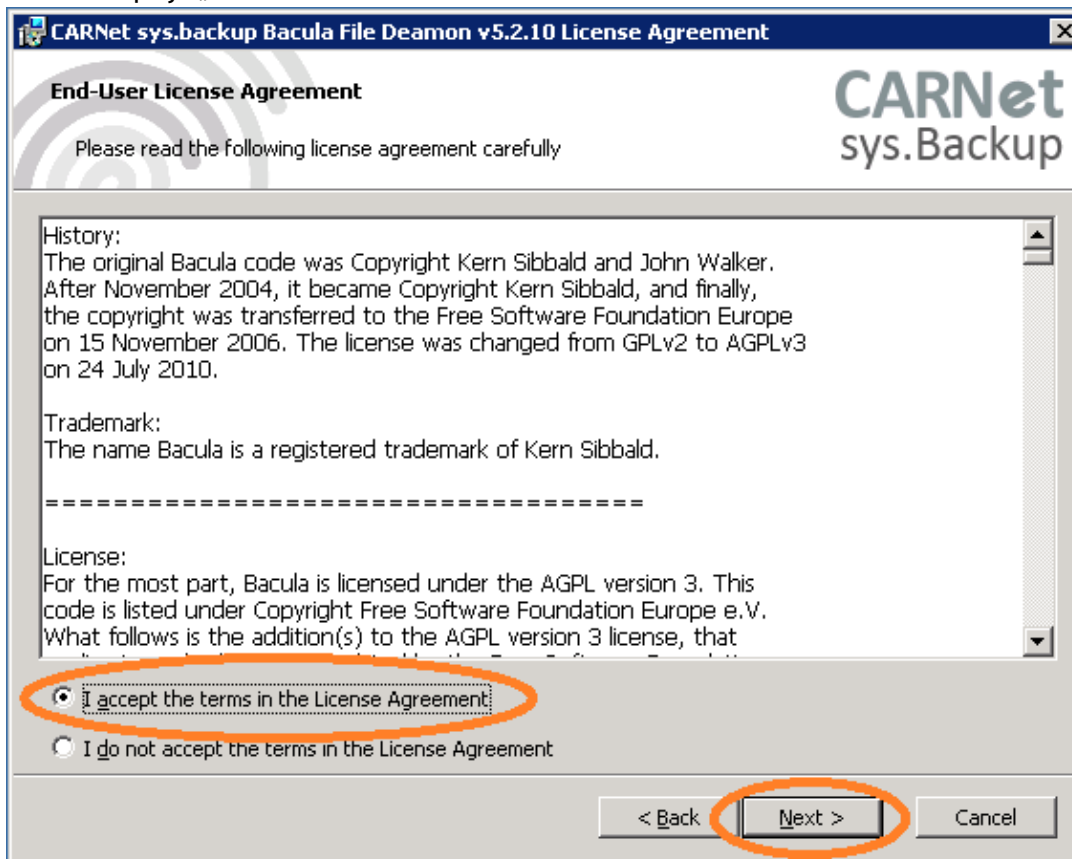
Windows Server 2008 i  
Windows Server 2008 R2

---

Nakon pokretanja instalacijskog programa Bacule, pojavit će se početni prozor. Potrebno je odabrati „Next“.



Na sljedećem prozoru potrebno je označiti „I accept the terms in the Licence Agreement“ te odabrati opciju „Next“.



U ovom prozoru potrebno je unijeti podatke o kontakt osobi na ustanovi te FQDN poslužitelja koji želite dodati u sys.backup uslugu. Polje „Password“ automatski se popunjava te nije potrebno nista upisivati. Za kraj, unesite IP adresu poslužitelja te odaberite „Next“.

**Configure File Daemon**

Configure File Daemon password and certificate parameters.

**CARNet sys.Backup**

Contact information

E-mail: Stjepan Mikulic <stjepan.mikulic@carnet.hr>

File Daemon Configuration

Name: SYSBACKUPWIN-fd

Password: (KTUVKuLZA:xpDI)+5J0<,P{!FhugX0XXzihIc4528W,x

Certificate generation parameters

Outgoing IPv4 address: 193.198.180.29

**Above information and generated public certificate will be sent encrypted to CARNet at the end of installation.**

< Back   Next >   Cancel

Nakon unosa podataka u prethodnom koraku, potrebno je odabrati „Install“ kako bi instalirali Baculu na poslužitelj.

**Ready to Install**

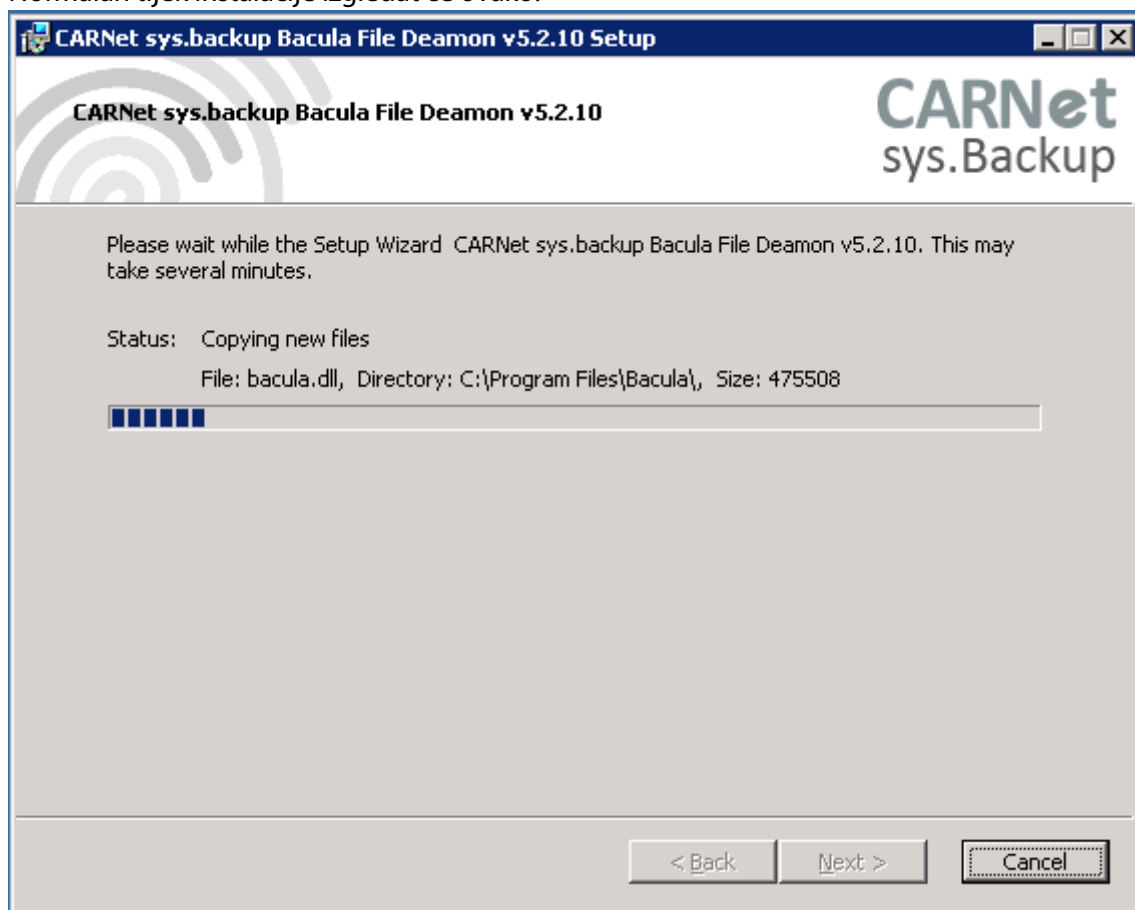
The Setup Wizard is ready to begin the Typical installation

**CARNet sys.Backup**

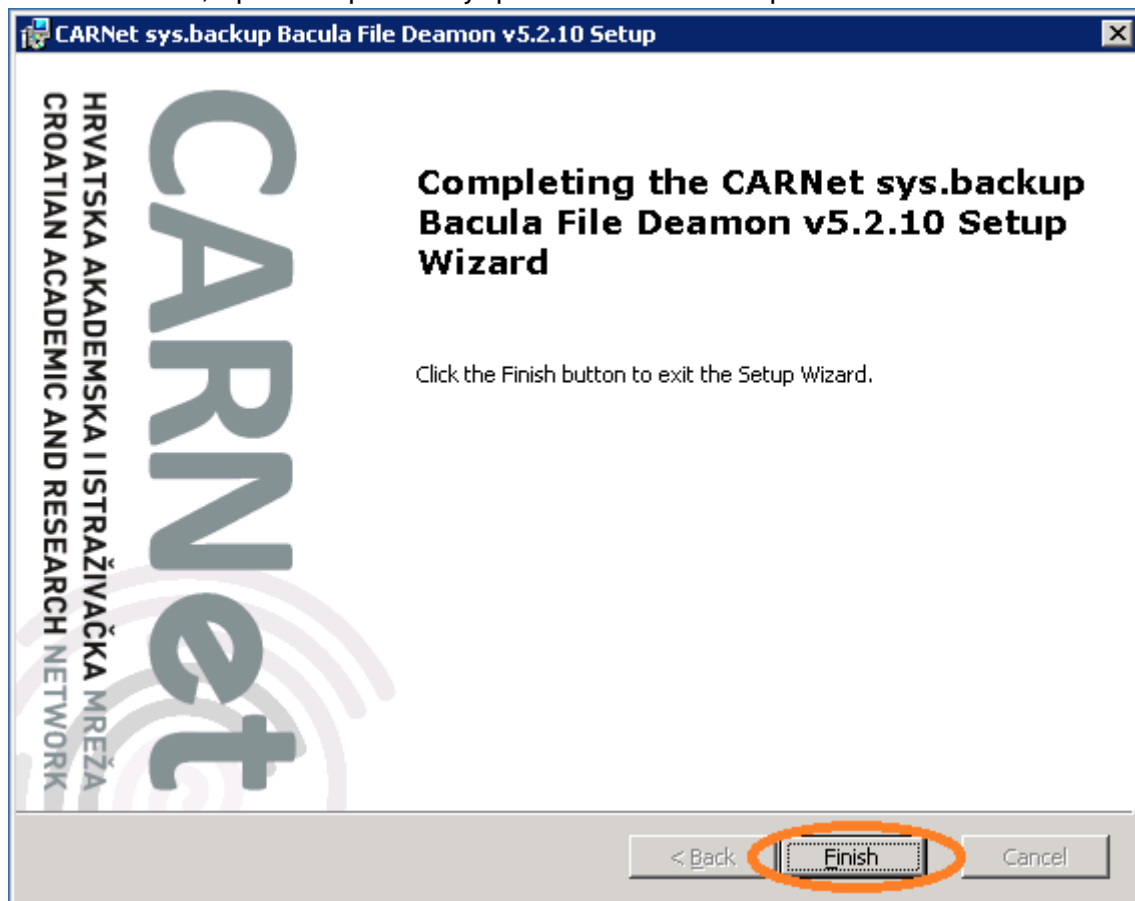
Click Install to begin the installation. If you want to review or change any of your installation settings, click Back. Click Cancel to exit the wizard.

< Back   Install   Cancel

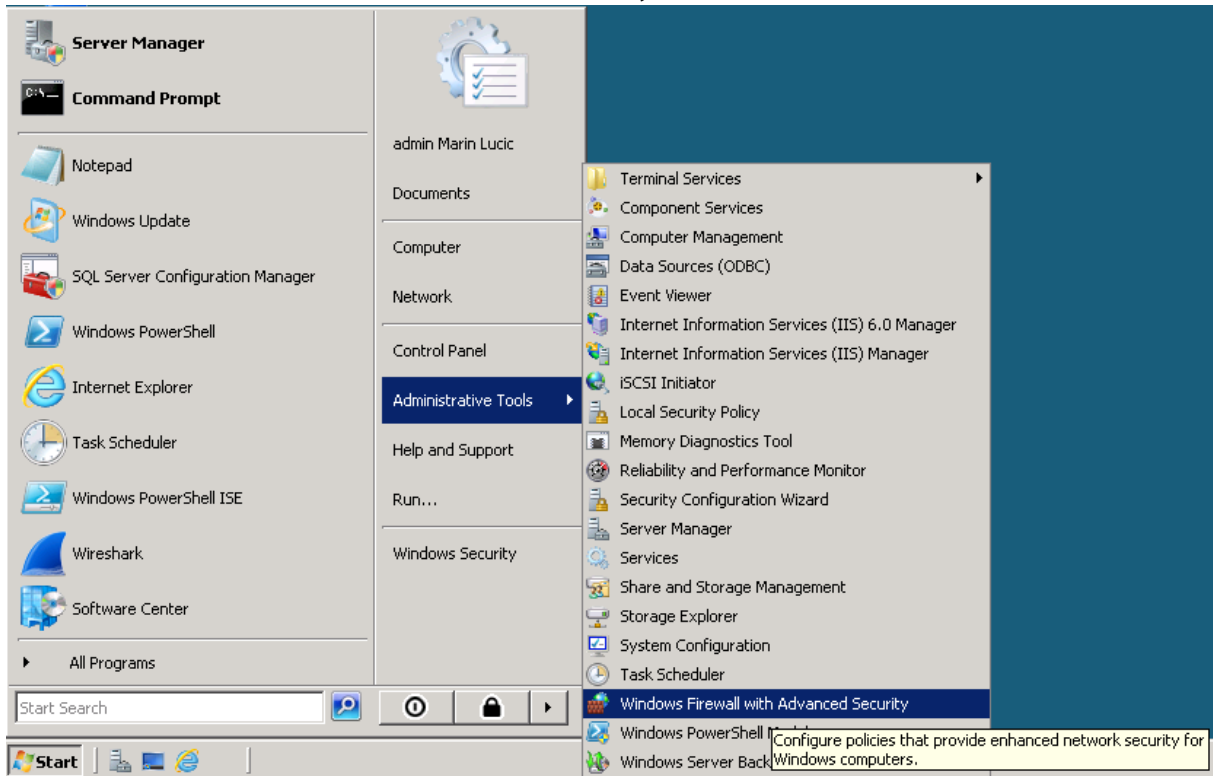
Normalan tijek instalacije izgledat će ovako:



Po završetku instalacije Bacule, pojavit će se ovakav prozor. Odaberite „Finish“. Time je instalacija Bacule završena, a podaci o poslužitelju poslani CARNet-u u kriptiranom obliku.

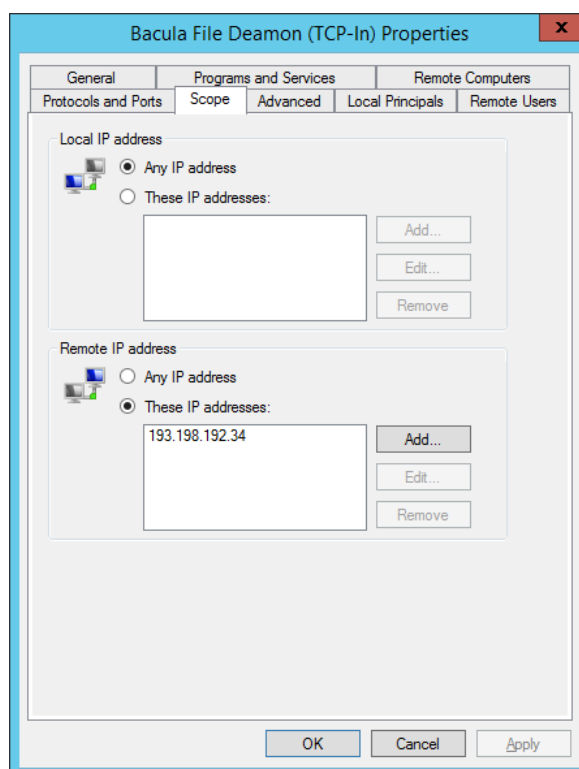
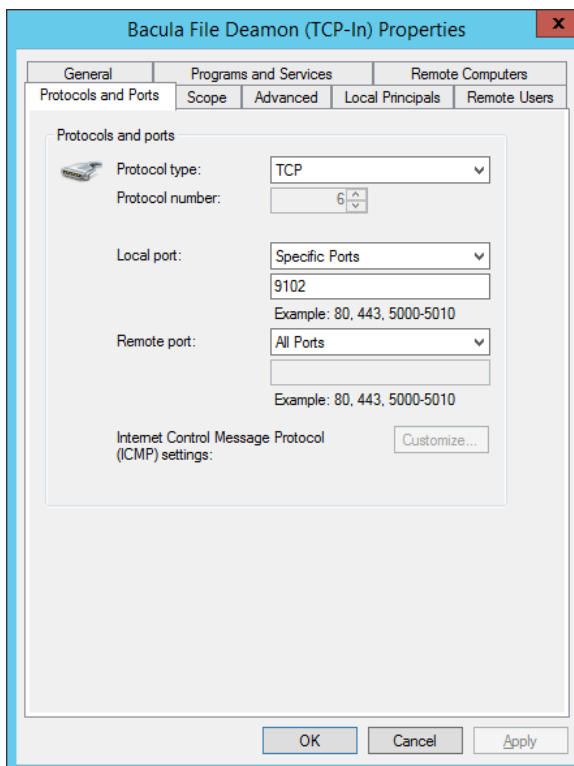
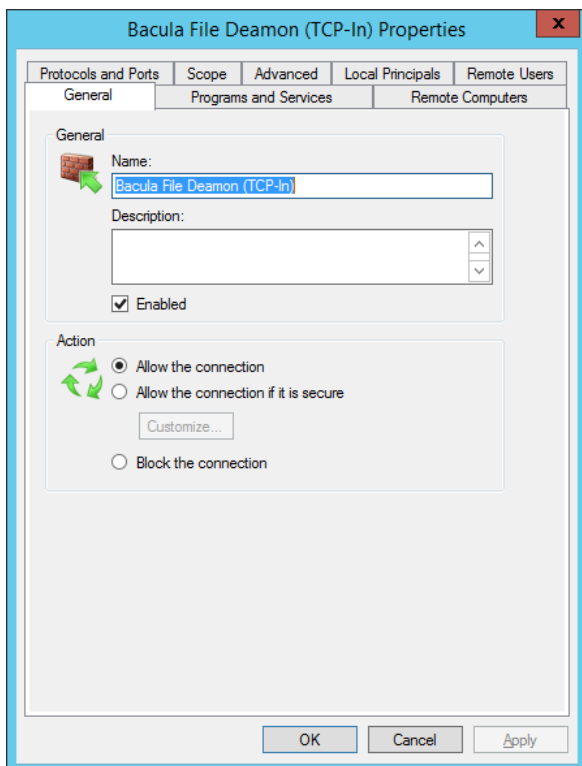


Windows Firewall rule se automatski kreira, tako da nije potrebno raditi dodatne korake, osim eventualne provjere postavki. Kliknite na „Start“, mišem prijedite preko „Administrative Tools“ te odaberite „Windows Firewall with Advanced Security“.



Nakon otvaranja Windows Firewall with Advanced Security, potrebno je pronaći Bacula File Daemon (TCP-In) rule, te dva puta kliknuti na isti.

Name	Group	Profile	Enabled	Action	Override	Program	Local Address	Remote Address
Bacula File Daemon (TCP-In)		All	Yes	Allow	No	C:\Progr...	Any	193.198.192.34



Time je instalacija završena te je poslužitelj dodan u sys.backup. Nakon sljedećeg backup ciklusa primit ćete e-mail na adresu koju ste unijeli u jednom od prethodnih koraka o statusu backupa.

Za sve informacije slobodno se obratite putem e-maila [sysbackup@carnet.hr](mailto:sysbackup@carnet.hr)