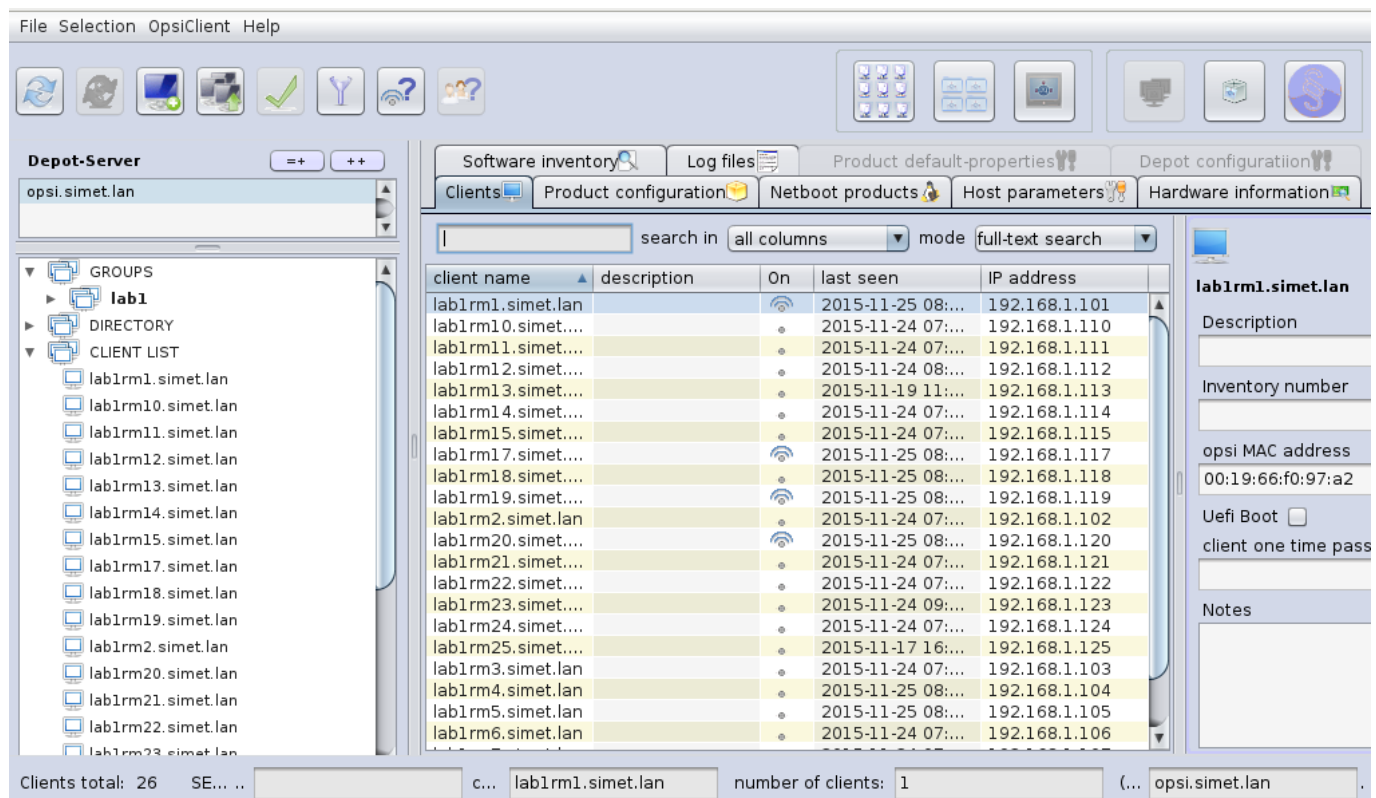


Opsi server - popis hardvera i softvera



Krajem kalendarske godine tradicionalno se obavlja inventura proteklog razdoblja. Trgovci zbrajaju robu na skladištu, tvrtke i ustanove popisuju pokretnu, nepokretnu imovinu. U našem poslu dobro je imati popisani hardver i softver, tako da ste uvijek spremni za slučaj da od vas traže takve podatke. Opsiserver ima odličnu podršku za taj "dosadan" posao.

Pošto smo se već u ranijim člancima upoznali s web sučeljem zvanim opsi *configuration editor*, ulogirajmo se na poznati način. Pronađimo u GROUPS našu grupu lab1 kreiranu u [prethodnom članku](#) [1]. Odaberimo prvog klijenta po redosljedu koji je *online*, kako bi na njega instalirali softver za vođenje inventara.



The screenshot shows the Opsiserver web interface. The main window displays a table of clients under the 'lab1' group. The table has columns for client name, description, On/Off status, last seen time, and IP address. The status of each client is indicated by a small icon (a blue circle with a white dot for 'On', and a grey circle with a white dot for 'Off').

client name	description	On	last seen	IP address
lab1rm1.simet.lan		On	2015-11-25 08:...	192.168.1.101
lab1rm10.simet....		Off	2015-11-24 07:...	192.168.1.110
lab1rm11.simet....		Off	2015-11-24 07:...	192.168.1.111
lab1rm12.simet....		Off	2015-11-24 08:...	192.168.1.112
lab1rm13.simet....		Off	2015-11-19 11:...	192.168.1.113
lab1rm14.simet....		Off	2015-11-24 07:...	192.168.1.114
lab1rm15.simet....		Off	2015-11-24 07:...	192.168.1.115
lab1rm17.simet....		On	2015-11-25 08:...	192.168.1.117
lab1rm18.simet....		On	2015-11-25 08:...	192.168.1.118
lab1rm19.simet....		On	2015-11-25 08:...	192.168.1.119
lab1rm2.simet.lan		Off	2015-11-24 07:...	192.168.1.102
lab1rm20.simet....		On	2015-11-25 08:...	192.168.1.120
lab1rm21.simet....		Off	2015-11-24 07:...	192.168.1.121
lab1rm22.simet....		Off	2015-11-24 07:...	192.168.1.122
lab1rm23.simet....		Off	2015-11-24 09:...	192.168.1.123
lab1rm24.simet....		Off	2015-11-24 07:...	192.168.1.124
lab1rm25.simet....		Off	2015-11-17 16:...	192.168.1.125
lab1rm3.simet.lan		Off	2015-11-24 07:...	192.168.1.103
lab1rm4.simet.lan		Off	2015-11-25 08:...	192.168.1.104
lab1rm5.simet.lan		Off	2015-11-25 08:...	192.168.1.105
lab1rm6.simet.lan		Off	2015-11-24 07:...	192.168.1.106

The right-hand panel shows details for the selected client 'lab1rm1.simet.lan', including fields for Description, Inventory number, opsi MAC address (00:19:66:f0:97:a2), Uefi Boot, and client one time pass.

Prebacimo se u *Product configuration* karticu, selektiramo *hwaudit*, zatražimo *setup* te *Execute now* pa potom *Save*. Ili zatražimo *setup* pa *reboot* klijenta. U oba slučaja bit će pokrenuta instalacija traženog proizvoda, odnosno modula za vođenje inventara.

File Selection OpsiClient Help

Depot-Server: opsi.simet.lan

GROUPS: lab1, DIRECTORY, CLIENT LIST

CLIENT LIST: lab1rm1.simet.lan, lab1rm10.simet.lan, lab1rm11.simet.lan, lab1rm12.simet.lan, lab1rm13.simet.lan, lab1rm14.simet.lan, lab1rm15.simet.lan, lab1rm17.simet.lan, lab1rm18.simet.lan, lab1rm19.simet.lan, lab1rm2.simet.lan, lab1rm20.simet.lan, lab1rm21.simet.lan, lab1rm22.simet.lan, lab1rm23.simet.lan

Software inventory | Log files | Product default-properties | Depot configuration

Clients | Product configuration | Netboot products | Host parameters | Hardware information

search in: all columns | mode: start-text search

Selected product group: (none)

Product ID	Status	Report	Requested ...	Version
config-win-base				
hwaudit				
javavm				
jedit				
opsi-adminutils				
opsi-client-agent	installed	success		4.0.5.2-2
opsi-configed				
opsi-setup-detector				
opsi-set-win-uac				
opsi-template				
opsi-template-with-admin				
opsi-uefi-netboot				
opsi-winst				
opsi-winst-test				
shutdownwanted				
swaudit				

Client Hard... 4.0.5-...
 Hardwareinve...
 Dependencies
 log... 3
 tail... 0
 tim... 90

Clients total: 26 | SE... | c... lab1rm1.simet.lan | number of clients: 1 | (... opsi.simet.lan)

File Selection OpsiClient Help

Depot-Server: opsi.simet.lan

GROUPS: lab1, DIRECTORY, CLIENT LIST

CLIENT LIST: lab1rm1.simet.lan, lab1rm10.simet.lan, lab1rm11.simet.lan, lab1rm12.simet.lan, lab1rm13.simet.lan, lab1rm14.simet.lan, lab1rm15.simet.lan, lab1rm17.simet.lan, lab1rm18.simet.lan, lab1rm19.simet.lan, lab1rm2.simet.lan, lab1rm20.simet.lan, lab1rm21.simet.lan, lab1rm22.simet.lan, lab1rm23.simet.lan

Software inventory | Log files | Product default-properties | Depot configuration

Clients | Product configuration | Netboot products | Host parameters | Hardware information

search in: all columns | mode: start-text search

Selected product group: (none)

Product ID	Status	Report	Requested ...	Version
config-win-base				
hwaudit			setup	
javavm				
jedit				
opsi-adminutils				
opsi-client-agent	installed	success		4.0.5.2-2
opsi-configed				
opsi-setup-detector				
opsi-set-win-uac				
opsi-template				
opsi-template-with-admin				
opsi-uefi-netboot				
opsi-winst				
opsi-winst-test				
shutdownwanted				
swaudit				

Client Hard... 4.0.5-...
 Hardwareinve...
 Dependencies
 log... 3
 tail... 0
 tim... 90

Clients total: 26 | SE... | c... lab1rm1.simet.lan | number of clients: 1 | (... opsi.simet.lan)

File Selection OpsiClient Help

Depot-Server
opsi.simet.lan

GROUPS
lab1
DIRECTORY
CLIENT LIST
lab1rm1.simet.lan
lab1rm10.simet.lan
lab1rm11.simet.lan
lab1rm12.simet.lan
lab1rm13.simet.lan
lab1rm14.simet.lan
lab1rm15.simet.lan
lab1rm17.simet.lan
lab1rm18.simet.lan
lab1rm19.simet.lan
lab1rm2.simet.lan
lab1rm20.simet.lan
lab1rm21.simet.lan
lab1rm22.simet.lan
lab1rm23.simet.lan

Software inventory | Log files | Product default-properties | Depot configuration

Clients | Product configuration | Netboot products | Host parameters | Hardware information

search in all columns mode start-text search

Selected product group (none)

Product ID	Status	Report	Requested ...	Version
config-win-base				
hwaudit		setup		
javavm				
jedit				
opsi-adminutils				
opsi-client-agent	installed	success		
opsi-configd				
opsi-setup-detector				
opsi-set-win-uac				
opsi-template				
opsi-template-with-admin				
opsi-uefi-netboot				
opsi-winst				
opsi-winst-test				
shutdownwanted				
swaudit				

Save
Execute now ("on_demand")
Reload
Visible columns

hwaudit
Client Hard...
Softw... 4.0.5-
Hardwareinve

Pr... Pr...
log...
log... 3
tail... 0
tim... 90

Clients total: 26 SE... c... lab1rm1.simet.lan number of clients: 1 (... opsi.simet.lan)

File Selection OpsiClient Help

Depot-Server
opsi.simet.lan

GROUPS
lab1
DIRECTORY
CLIENT LIST
lab1rm1.simet.lan
lab1rm10.simet.lan
lab1rm11.simet.lan
lab1rm12.simet.lan
lab1rm13.simet.lan
lab1rm14.simet.lan
lab1rm15.simet.lan
lab1rm17.simet.lan
lab1rm18.simet.lan
lab1rm19.simet.lan
lab1rm2.simet.lan
lab1rm20.simet.lan
lab1rm21.simet.lan
lab1rm22.simet.lan
lab1rm23.simet.lan

opsi config editor

Do you want to reboot the following clients?
lab1rm1.simet.lan

No Yes

Product default-properties | Depot configuration

Host parameters | Hardware information

mode full-text search

	IP address
08:...	192.168.1.101
07:...	192.168.1.110
07:...	192.168.1.111
08:...	192.168.1.112
11:...	192.168.1.113
07:...	192.168.1.114
07:...	192.168.1.115
08:...	192.168.1.117
08:...	192.168.1.118
08:...	192.168.1.119
07:...	192.168.1.102
08:...	192.168.1.120
07:...	192.168.1.121
07:...	192.168.1.122
09:...	192.168.1.123
07:...	192.168.1.124
16:...	192.168.1.125
07:...	192.168.1.103
08:...	192.168.1.104
lab1rm5.simet.lan	2015-11-25 08:...
lab1rm6.simet.lan	2015-11-24 07:...
lab1rm5.simet.lan	2015-11-25 08:...
lab1rm6.simet.lan	2015-11-24 07:...

lab1rm1.simet.lan
Description
Inventory number
opsi MAC address
00:19:66:f0:97:a2
Uefi Boot
client one time pass
Notes

Clients total: 26 SE... c... lab1rm1.simet.lan number of clients: 1 (... opsi.simet.lan)

Desni klik *Reload* opcija nam može osvježiti progres instalacije klijentskog računala.

File Selection OpsiClient Help

Depot-Server: opsi.simet.lan

GROUPS: lab1, DIRECTORY, CLIENT LIST

CLIENT LIST: lab1rm1.simet.lan, lab1rm10.simet.lan, lab1rm11.simet.lan, lab1rm12.simet.lan, lab1rm13.simet.lan, lab1rm14.simet.lan, lab1rm15.simet.lan, lab1rm17.simet.lan, lab1rm18.simet.lan, lab1rm19.simet.lan, lab1rm2.simet.lan, lab1rm20.simet.lan, lab1rm21.simet.lan, lab1rm22.simet.lan, lab1rm23.simet.lan

Software inventory | Log files | Product default-properties | Depot configuration

Clients | Product configuration | Netboot products | Host parameters | Hardware information

search in: all columns | mode: start-text search

Selected product group: (none)

Product ID	Status	Report	Requested ...	Version
config-win-base				
hwaudit	unknown	installing ()	setup	
javavm				
jedit				
opsi-adminutils				
opsi-client-agent	installed	success		4.0.5.2-2
opsi-configed				
opsi-setup-detector				
opsi-set-win-uac				
opsi-template				
opsi-template-with-admin				
opsi-uefi-netboot				
opsi-winst	installed	success		4.11.4.15-1
opsi-winst-test				
shutdownwanted				
swaudit				

hwaudit Client Hard...
 Softw... 4.0.5-
 Hardwareinve
 Dependencies
 Pr... Pr...
 log...
 log... 3
 tail... 0
 tim... 90

Clients total: 26 | SE... | c... lab1rm1.simet.lan | number of clients: 0 | (... opsi.simet.lan)

File Selection OpsiClient Help

Depot-Server: opsi.simet.lan

GROUPS: lab1, DIRECTORY, CLIENT LIST

CLIENT LIST: lab1rm1.simet.lan, lab1rm10.simet.lan, lab1rm11.simet.lan, lab1rm12.simet.lan, lab1rm13.simet.lan, lab1rm14.simet.lan, lab1rm15.simet.lan, lab1rm17.simet.lan, lab1rm18.simet.lan, lab1rm19.simet.lan, lab1rm2.simet.lan, lab1rm20.simet.lan, lab1rm21.simet.lan, lab1rm22.simet.lan, lab1rm23.simet.lan

Software inventory | Log files | Product default-properties | Depot configuration

Clients | Product configuration | Netboot products | Host parameters | Hardware information

search in: all columns | mode: start-text search

Selected product group: (none)

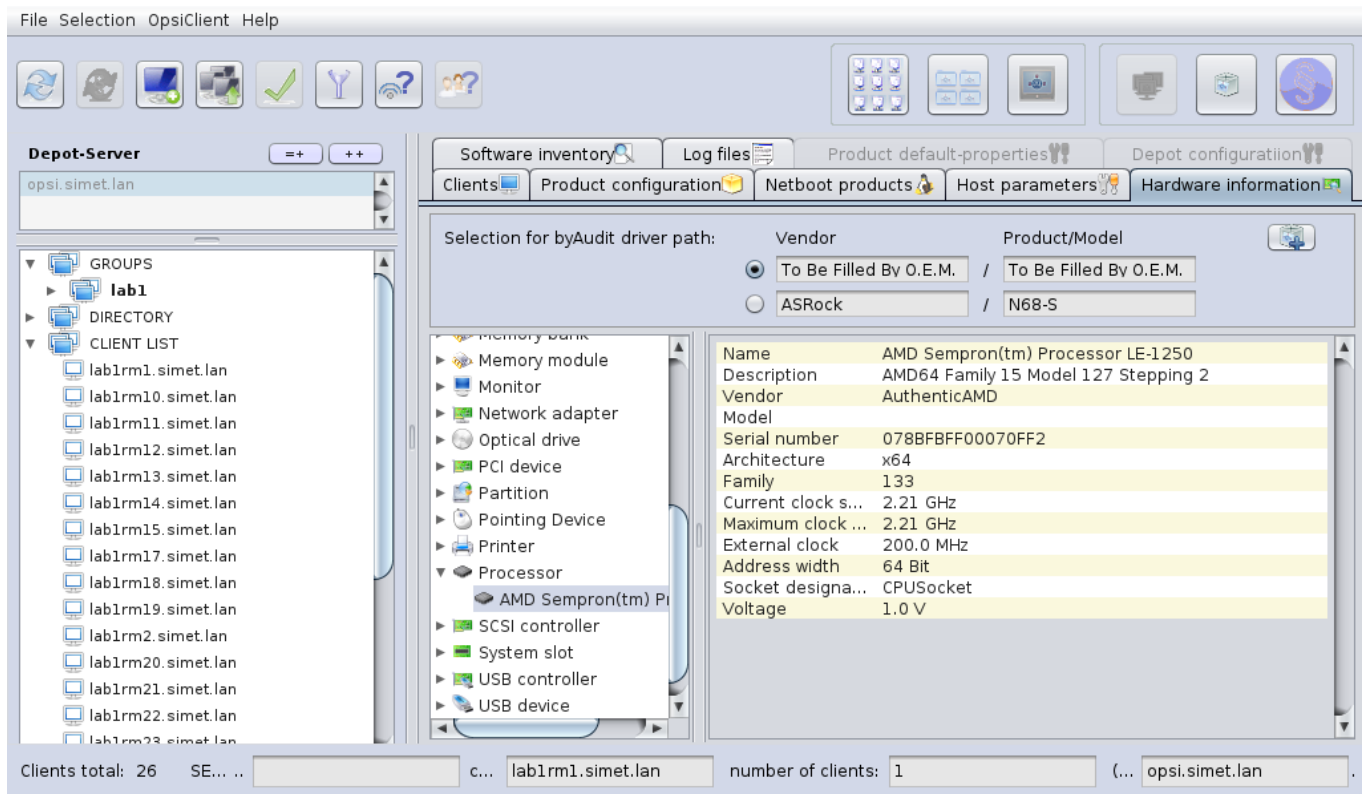
Product ID	Status	Report	Requested ...	Version
config-win-base				
hwaudit	installed	success		4.0.5-1
javavm				
jedit				
opsi-adminutils				
opsi-client-agent	installed	success		4.0.5.2-2
opsi-configed				
opsi-setup-detector				
opsi-set-win-uac				
opsi-template				
opsi-template-with-admin				
opsi-uefi-netboot				
opsi-winst	installed	success		4.11.4.15-1
opsi-winst-test				
shutdownwanted				
swaudit				

hwaudit Client Hard...
 Softw... 4.0.5-
 Hardwareinve
 Dependencies
 Pr... Pr...
 log...
 log... 3
 tail... 0
 tim... 90

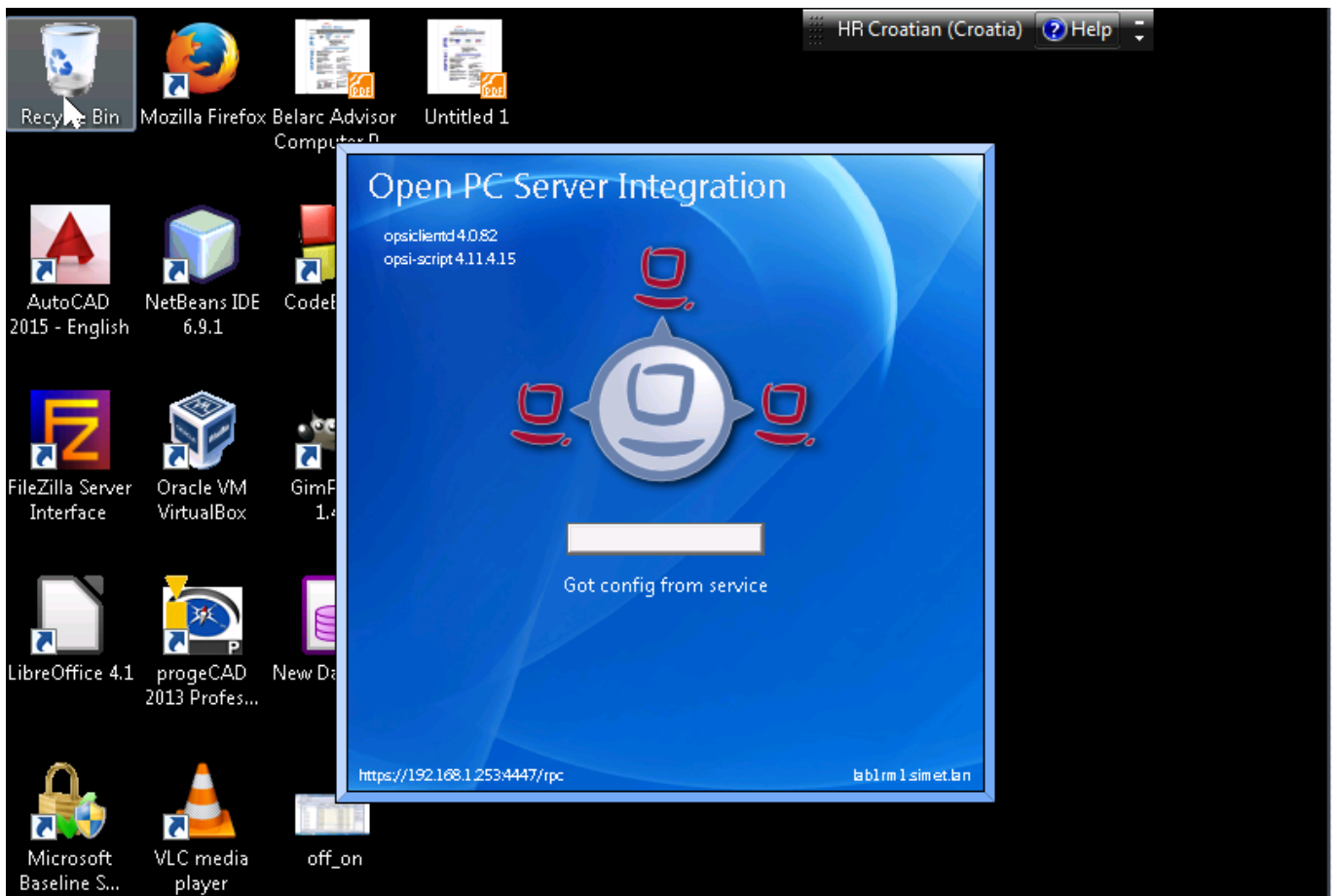
Clients total: 26 | SE... | c... lab1rm1.simet.lan | number of clients: 1 | (... opsi.simet.lan)

Nakon uspješne instalacije prebacimo se na *Hardware information* karticu, gdje možemo prelistati hardverske karakteristike instaliranog klijentskog računala.

i



Na identičan način instaliramo modul za softverski inventar kroz *Product configuration* karticu, selektiranjem retka *swaudit*. Nakon pokrenute akcije "instalacija na Windows 7 klijenta", napredak procesa izgleda kao na ilustraciji.







Nakon instalacije *Software inventory* kartica daje pregled dostupne verzije softvera, arhitekture na određenom klijentu.

Ukratko, s nekoliko klikova kroz *opsi configuration editor* dobili smo informaciju o raspoloživom hardveru i softveru na određenom klijentskom računalu. Inventura može početi :)

Trebalo bi još napisati upit (query) za lijepo formatiran izvještaj. Zasada, napravite *copy&paste* podataka u tablični kalkulator.

File Selection OpsiClient Help

Depot-Server
opsi.simet.lan

GROUPS
lab1
lab1rm1.simet.lan
lab1rm10.simet.lan
lab1rm11.simet.lan
lab1rm12.simet.lan
lab1rm13.simet.lan
lab1rm14.simet.lan
lab1rm15.simet.lan
lab1rm17.simet.lan
lab1rm18.simet.lan
lab1rm19.simet.lan
lab1rm2.simet.lan
lab1rm20.simet.lan
lab1rm21.simet.lan
lab1rm22.simet.lan
lab1rm23.simet.lan
lab1rm24.simet.lan
lab1rm25.simet.lan

Clients Product configuration Netboot products Host parameters Hardware information
Software inventory Log files Product default-properties Depot configuration

Software inventory lab1rm1.simet.lan (as at 2015-12-07 12:54:38)

name	version	subversi...	archit...	...	licenseKey	windowsS...
AutoCAD 2015 - English	20.0.51.0		x64			{5783f2d...
AutoCAD 2015 Language Pack - English	20.0.51.0		x64			{5783f2d...
Autodesk Application Manager	4.0.69.0		x86			autodesk ...
Autodesk App Manager	1.2.0		x86			{c812554...
Autodesk AutoCAD 2015 - English	20.0.51.0		x64			autocad ...
Autodesk AutoCAD Performance Feed...	1.2.2.0		x86			{857354...
Autodesk BIM 360 Glue AutoCAD 2015...			x64			autodesk ...
Autodesk BIM 360 Glue AutoCAD 2015...	3.32.3004		x64			{9d5890...
Autodesk Content Service	3.2.0.0		x86			{a37cdb5...
Autodesk Content Service Language P...	3.2.0.0		x86			{a37cdb5...
Autodesk Featured Apps	1.2.0		x86			{eddee9...
Autodesk Material Library 2015	5.2.9.100		x86			{427f733...
Autodesk Material Library 2015			x86			autodesk ...
Autodesk Material Library Base Resolu...	5.2.9.100		x86			{abe2f70...
Autodesk Material Library Base Resolu...			x86			autodesk ...
Classic Shell	3.6.8		x64			{fea1590...
Connection Manager			x64			connectio...
Connection Manager			x86			connectio...
CrypTool 1.4.30	1.4.30		x86			cryptool
Crystal Reports for Visual Studio	12.51.0.240		x86			{ac41d92...
DirectDrawEx			x64			directdra...
DirectDrawEx			x86			directdra...

Clients total: 26 SE... c... lab1rm1.simet.lan number of clients: 1 (... opsi.simet.lan

Vezani članci:

[Opsi server - Instalacija](#) [2]

[Opsi server - konfiguracija](#) [3]

[Priprema 64-bitne instalacije Windowsa 7 za Opsi server](#) [4]

[Nenadzirana instalacija Windowsa 7 preko mreže](#) [5]

[Instalacija Opsi klijenta](#) [6]

[Opsi server u računalnoj učionici](#) [1]

pon, 2015-12-21 10:52 - Goran Šljivić **Vijesti:** [Linux](#) [7]

Kategorije: [Software](#) [8]

Vote: 0

No votes yet

Source URL: <https://sysportal.carnet.hr./node/1591>

Links

[1] <https://sysportal.carnet.hr./node/1562>

[2] <https://sysportal.carnet.hr./node/1541>

- [3] <https://sysportal.carnet.hr./node/1546>
- [4] <https://sysportal.carnet.hr./node/1548>
- [5] <https://sysportal.carnet.hr./node/1550>
- [6] <https://sysportal.carnet.hr./node/1554>
- [7] <https://sysportal.carnet.hr./taxonomy/term/11>
- [8] <https://sysportal.carnet.hr./taxonomy/term/25>